



**Southern Maryland Tri-County  
Community Action Committee, Inc.**



Partner Agency—CFC #62038

**HEAD START  
2013**

# **Annual Community Report**



Southern Maryland Tri-County Community Action Committee, Inc.  
P.O. Box 280, Hughesville, MD 20637-0280  
Fax: 301-274-0637  
301-870-3770 301-274-4474 301-475-5574 410-535-1010

# HEAD START PROGRAM

## Purpose and Mission

Head Start is a national program that promotes school readiness by enhancing the social and cognitive development of children through the provisions of educational, health, nutritional, social, and other services to enrolled children and families.

SMTCCAC Head Start’s mission is to promote school readiness by assisting eligible families to improve social, emotional and cognitive development of the individual child through the support of educational, health, nutritional and community services.

The following report is based on statistics from the 2012-2013 program year. SMTCCAC was funded to serve 593 children in Calvert, Charles and St. Mary’s counties.

## 598 Children were Served During the Year

## 543 Families were served

## Child Demographics

### Ethnicity

35 were of Hispanic/Latino origin, 563 were not.

### Race

American Indian or Alaska native	1
Asian	6
Black or African American	362
Native Hawaiian or Pacific Islander	2
White	98
Bi-racial or Multi-racial	80
Other (families who felt race not reflected)	23
Elected not to specify race	26

## Family Demographics

23% or 126 were two parent families  
77% or 417 were single-parent families

### Education

Bachelors degree or higher	36
Associates degree or higher	182
High School or GED	256
Less than high school	69

### Employment

Two Parent Families	
Both employed	25
One unemployed	75
Both unemployed	26

## One Parent Families

Employed	218
Unemployed	199

Of employed families those who are military 8

## Head Start Components

### EDUCATION

The program’s goal is to ensure that children leave Head Start with increased abilities and experiences that have prepared them to be successful students on all levels and ready for kindergarten. The Creative Curriculum was used to provide a developmentally appropriate early childhood education program. An individualized learning program was developed for each child.



### MENTAL HEALTH, DISABILITIES/SPECIAL NEEDS

Regardless of the disability or special need of any child, all children learn better when grouped in a classroom with their typically developing peers. At least 10% of Head Start’s funded enrollment was set aside for children with diagnosed disabilities. These children participated in the full range of classroom activities and had their individual needs met.

### HEALTH AND SAFETY

Children were screened within 45 days to identify and address vision and hearing problems early so that they do not interfere with a child’s learning and development. Staff assisted families to provide comprehensive health care for their child.

Children were taught basic health practices, such as hand washing and tooth brushing.

### TRANSPORTATION

Transportation was provided for 9 of 13 centers. Transportation is in accordance with state and federal requirements. A bus monitor was on each route to ensure the safety and extend the learning of the children.

### HEALTHY MEALS

The program ensured that the children received a healthy breakfast, lunch, and/or snack. The meals were served family style to encourage the development of social and language skills. A wide variety of foods with emphasis on fruits and vegetables, whole grains, and limited sugar, salt and fats. Menus were review by a registered dietitian.

### PARENT INVOLVEMENT

Involving parents in the Head Start Program is an important aspect of providing an excellent program.

## Re-competition

SMTCCAC, Inc. Head Start was subject to re-competition. A re-competition grant application was submitted during the 2011-2012 program year. In April 2013 a five-year grant was awarded to serve 120 families in Charles County beginning in the 2013-2014 program year. Due to the delay in re-competition results SMTCCAC, Inc. Head Start was granted a budget extension from April 1, 2013-June 30, 2013. The budget was administered as follows:

## Extension Budget

Categories	Budgeted	Spent	Non-Federal Match	Explanation
Personnel	\$679,288	679,221	17,390	Parent Volunteers
Fringe	203,786	261,733		
Travel	4,450	2,942		
Supplies	34,404	33,016		
Contractual	20,575	22,371	2,949	Classroom
Other	144,186	87,406	269,491	Community Vols.
Indirect	72,,632	72,632		Space
Total	1,159,321	1,159,321	289,830	

## FY 2013-2014 Budget

Categories	Budgeted	Explanation
Personnel	409,467	
Fringe	132,829	
Travel	1,376	
Supplies	9,998	Office, Classroom, Medical
Contractual	33,732	Health, Mental Health, Copier
Other	171,280	Insurance, Facilities, Transportation
Indirect	63,265	
Total	821,947	

## SMTCCAC, Inc. will operate at the following Head Start locations in 2013-2014

**Brawners**  
**6655 Weaver Street**  
**Indian Head, MD 20640**

**Eva Turner**  
**1000 Bannister Circle**  
**Waldorf, MD 20602**

**Waldorf- Health Partners**  
**3070 Crain Highway**  
**Waldorf, MD 20602**

## Head Start Administrative Office

**Luther Stuckey Building, 8371 Old Leonardtown Rd., Hughesville, MD 20637-0280**

### PARENT INVOLVEMENT & FAMILY SERVICES

The key components of achieving parent involvement in the program are as follows:

- Creating a partnership with parents to empower them to set and achieve family goals.

Relationships with parents are built beginning at enrollment. Families are linked to services necessary for them to move toward their goals. Parents are encouraged to apply for staff positions.

- Ensuring programs are open to parents at any time.

Parents are provided opportunities to volunteer and be involved in the development of curriculum. Parents assist in organizing center parent committees.

- Supporting parents as primary teach for their children.

Parents are involved in determining the educational goals for their children and provided with opportunities to enhance their parenting skills. The program assists parents to transition their children into school. Parents are helped to become active partners in assessing health care for their children.

### Policy Council



Policy Council is an elected group of parents that assist Head Start in program decision-making and governance. Parents were elected from each Head Start center to serve as representatives on Policy Council in September and October of 2012. Twenty-six parents attended during the year. In addition, four community representatives were elected in October and participated throughout the year.

The work of the Policy Council included some of the following: review and approval of program policies and 12 component work plans; input on hiring committees and approval of over 20 regular staff and substitutes; input, review, and approval of the new Head Start program design and budget; and participation in program self-assessment.

### FY 2012-2013 Budget

Categories	Budgeted	Spent	Non-Federal Match	Explanation
Personnel	2,666,202	2,593,845	47,248	Parent Volunteers
Fringe	806,815	756,317		
Travel	3,132	4,039		
Supplies	67,150	117,591		Classroom
Contractual	36,800	47,331	11,797	Community Vols.
Other	536,245	597,221	1,047.178	Space
Indirect	308,546	308,546		
Total	4,424,890	4,424,890	1,106,223	

Community volunteers include public school speech therapists, county librarians, volunteer firemen, Health Departments and AmeriCorps members.

In-kind space includes Health Partners in Charles County, Charles County Public School System, St. Mary's Housing Authority and the Calvert County Public School System.

### CLASSROOM OUTCOMES

123 children were in full-day classes - 6 hours a day, 5 days a week

424 children were in part-day classes - 3.5 hours a day, 4 days a week

20 children were in half-day class - 4 hours a day, 5 days a week

26 children were in a home based group

The average monthly enrollment was 565, representing an overall attendance rate of 68%.

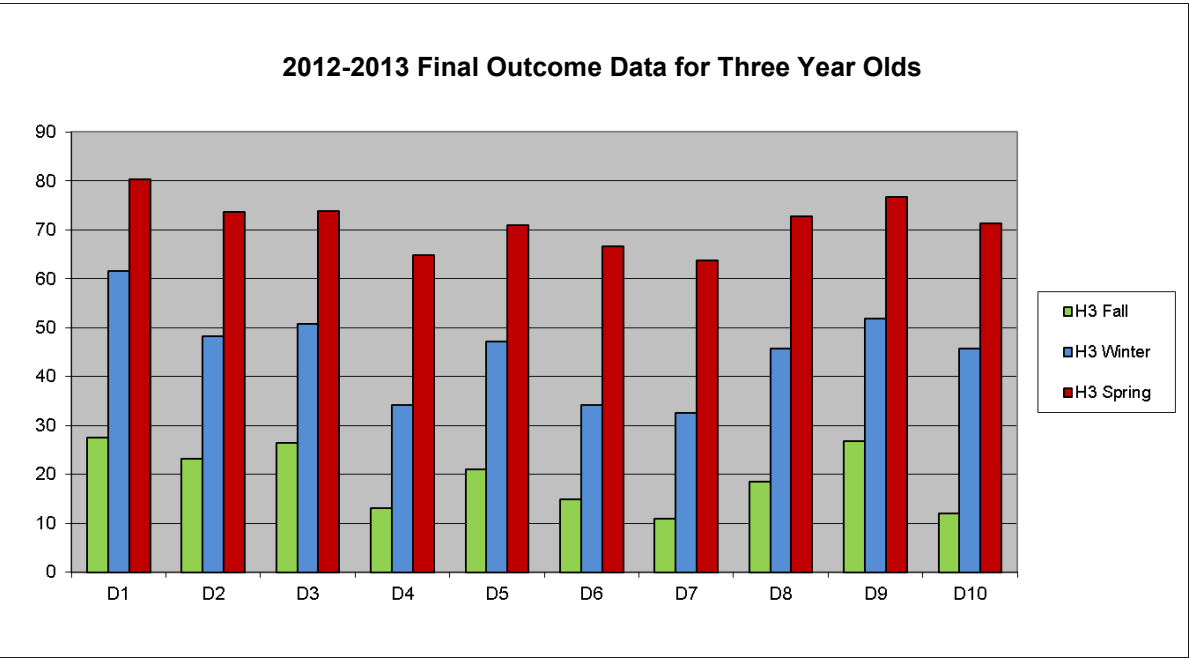
261 children transitioned to kindergarten.

### CHILD OUTCOMES

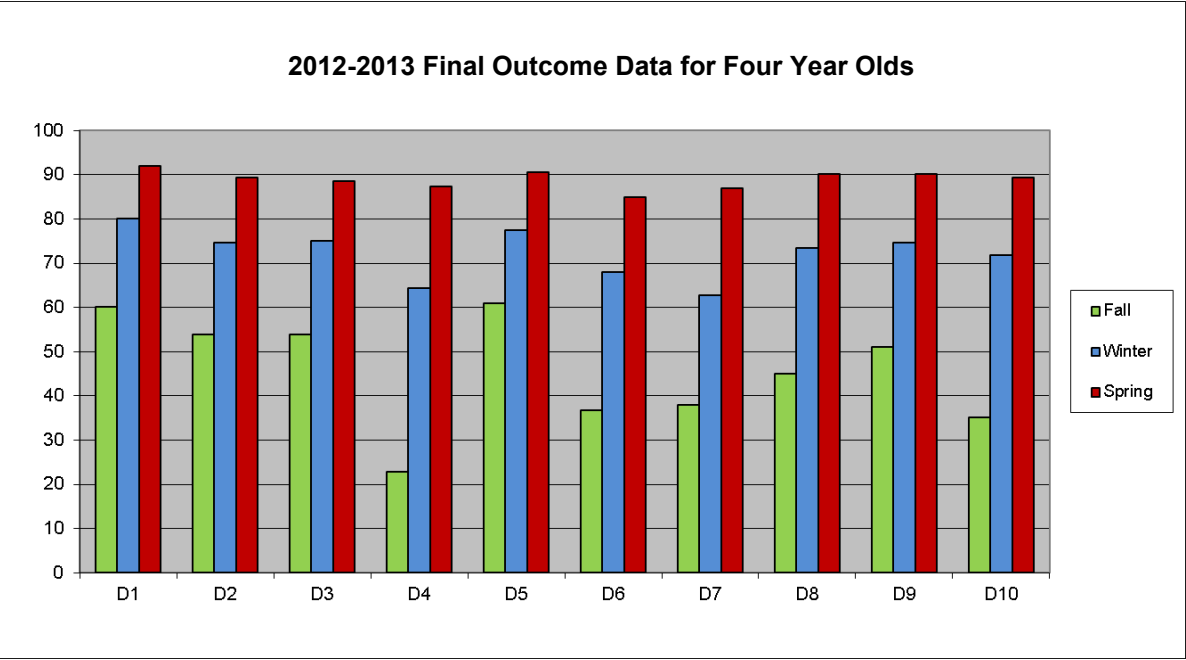
The children in the Head Start program were assessed using the Work Sampling System three times during the year - Fall, Winter and Spring. The outcomes were used to plan classroom activities to maximize the development of each individual child in the areas of :

- **D1** - Physical/Health Development
- **D2** - Social Emotional Development
- **D3** - Approaches to Learning
- **D4** - Logic and Reasoning
- **D5** - Language Development
- **D6** - Literacy Knowledge & Skills
- **D7** - Math Knowledge & Skills
- **D8** - Science Knowledge & Skills
- **D9** - Creative Arts Expression
- **D10** - Social Studies Skills (N/A)

The following graph shows the comparison of Fall, Winter, Spring Assessment results for all domains for the 2012-2013 program year.



Approximately 70% of three year old children were assessed to be proficient in all domains. The domains with the lowest proficiency scores were (D4) Logic and Reasoning, (D6) Literacy and Knowledge Skills and (D7) Math Knowledge and Skills, all were below 70%.



Approximately 88% of four year old children were assessed to be proficient in all domains. None of the domains were below 80%.

The graphs show that both three year olds and four year olds made progress as a group throughout the year in each domain.

School readiness goals were developed to target specific needs in our program, as well as target domain areas that need improvement. This plan will address specific child performance goals and help enhance the preparation of lesson plans to achieve school readiness goals.

HEALTH OUTCOMES

	At Enrollment		End of Year	
	Number of Children	% of Enrollment	Number of Children	% of Enrollment
Have Health Insurance	592	99	592	99
Ongoing source for medical care	590	99	590	99
Ongoing source for dental care	538	90	550	92
Have up-to-date immunizations	475	79	485	81



Dental screening for all Head Start children in the program.

2012-2013 Center Locations

**Calvert County**

Huntingtown Head Start Center  
3720 Solomons Island rd.  
Huntingtown, MD 20639

Patuxent Elementary Head Start Center  
35 Appeal Lane  
Lusby, MD 20657

Yardley Hills Head Start Center  
700 Yardley Drive  
Prince Frederick, MD 20678

**ST. Mary's County**

Holland Forrest Head Start Center  
41950 Satchel Paige Way  
Hollywood, MD 20636

Hunting Creek Head Start Center  
46925 Crocus Street  
Lexington Park, MD 20653

Jarboe Head Start Center  
21161 Lexwood Drive  
Lexington Park, MD 20653

Patuxent Woods Head Start Center  
46021 Radford Lane  
Lexington Park, MD 20653

**Charles County**

Barnhart Head Start Center  
4800 Lancaster Circle  
Waldorf, MD 20663

Brawners Head Start Center  
6655 Weaver Street  
Indian Head, MD 20640

Eva Turner Head Start Center  
1000 Bannister Circle  
Waldorf, MD 20602

Lifelong Learning Head Start Center  
12300 Vivian Adams Drive  
Waldorf, MD 20602

Waldorf @ Health Partners  
3070 Crain Highway  
Waldorf, MD 20601

Waldorf @ Neal Head Start Center  
12105 St. George's Dr.  
Waldorf, MD 20602

**Administrative Office**

Luther Stuckey Building  
8371 Old Leonardtown Rd  
Hughesville, MD 20637  
PH: 301-274-474 Fax: 301-274-0637

