

Southern Maryland Tri-County Community Action Committee, Inc.



Moving Forward into a New Day

July 1, 2014 - June 30, 2015

2015 Annual Report



SMTCCAC'S MISSION STATEMENT

To provide services for eligible citizens that alleviate the causes and conditions of poverty, promote upward mobility and enrich the quality of life.

CELEBRATING 50 YEARS IN THE SOUTHERN MARYLAND COMMUNITY



2015 BOARD OF DIRECTORS

Back row from left, Richard L. Lord, Joyce Freeland, Josephus Harris, Jr., Naomi Watkins, and Rev. Ernest

Front row from left, Mary Dryden, Delois Barnes, Anita Bratcher-Butler, and Dr. Nancy Zearfoss.

Not all members are in photo.

THE COMMUNITY ACTION PROMISE

Community Action changes people's lives,
embodies the spirit of hope, improves communities,
and makes Southern Maryland a better place to live.

We care about the entire community, and we are dedicated to
helping people help themselves and each other.



Our Vision

To create opportunities for all citizens to realize their potential
to become self-sufficient.

SMTCCAC'S BOARD OF DIRECTORS

Officers

Richard L. Lord - Chairman
St. Mary's County

Delois M. Barnes - 1st Vice Chair
Charles County

Ernest Downs - 2nd Vice Chair
Charles County

Anita Bratcher-Butler - Treasurer
Charles County

Dr. Nancy Zearfoss - Secretary
St. Mary's County

Board Members

Calvert County

Josephus L. Harris, Jr.
Naomi Watkins
Dr. Susan Mattingly

Charles County

Michele Green-Harrison
Elzora Trimmer
Martia Hayward
Liliana Perez

St. Mary's County

Mary E. Dryden
Jennifer Sibley

The agency is governed by a volunteer board of directors, with equal representation from Calvert, Charles and St. Mary's counties' consumers, representatives from the private sector and representatives of local elected officials

PRESIDENT

Swynice M. Hawkins

Agency Background

Southern Maryland Tri-County Community Action Committee, Inc. (SMTCCAC) was incorporated as a 501(c)3 in August 1965. This occurred after three Calvert County residents acted out of concern over the level of poverty in their county.

The governing board of the agency has been composed of Calvert, Charles and St. Mary's residents, in equal proportions since the county commissioners from the three counties designated SMTCCAC as the official recipient of Economic Opportunity Act funds in 1965. Tri-County Council for Southern Maryland was responsible for the first funds received to begin operations after they submitted an application for funding on behalf of SMTCCAC.

Once funding arrived, the first five employees were hired in 1966. Community Organization and Neighborhood Youth Corps, the first programs, started operating in 1966. Head Start and three other programs began in 1967 to address the alleviation of poverty in Southern Maryland.

The agency has continuously offered services for 50 years!

The agency's services periodically change to fit needs as communities and economic realities evolve. Economic insecurity remains a problem for far too many of our neighbors. That fact keeps us striving to — **Help People to Help Themselves** — through a wonderful network of new partners and supporters. Working together we can bring hope. We can promote upward mobility where it is most needed.

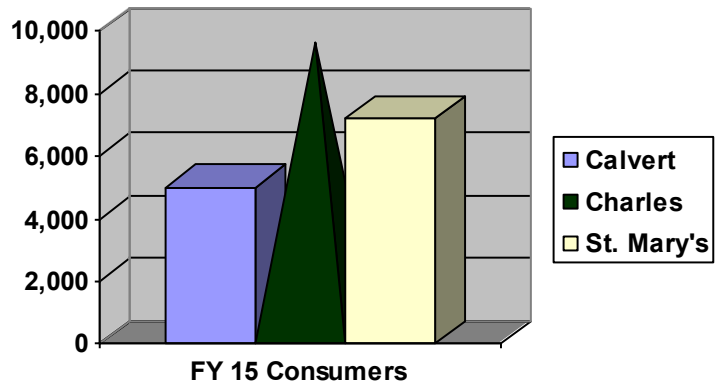
21,800 UNDUPLICATED CONSUMERS BENEFITED IN FY15

Number and Percentage by County

5,014 - Calvert - 23%

9,592 - Charles - 44%

7,194 - St. Mary's - 33%



SMTCCAC'S 2015 ACTIVITIES

Affordable Rental Housing
Career Training School for Class B Commercial Driver's License
Head Start Program
The Energy Assistance Program
The Tri-County Fuel Fund
Friendly Health Services
Housing Opportunities for Persons with AIDS (HOPWA)
Housing Counseling Services
Southern Maryland Rural Area Transportation (SMART)
Senior Companion Program
The Emergency Food Assistance Program (TEFAP)
Weatherization/Housing Preservation Program

GOALS & OBJECTIVES

SMTCCAC strives to achieve the National Goals of Community Action Agencies, those goals are:

1. Low-income people become more self-sufficient.
2. The conditions in which low-income people live are improved.
3. Low-income people own a stake in their community.
4. Partnerships among service providers to low-income people are achieved.
5. The Agency increases its capacity to achieve results.
6. Low-income people, especially populations that are most vulnerable, achieve their potential by promoting family and other supportive environments.

SMTCCAC'S GUIDING PRINCIPLES

- Currently all people are not equal in their access to opportunities to create success
- Every family should have the opportunity to financially support themselves
- Children and families must be afforded quality services and opportunities that foster growth and development
- Basic human needs must be addressed prior to implementing change; they include food, clothing, utilities, and health care
- Education, Health, & Economic opportunity systems must function to offer success to all
- Housing opportunities must be made available at affordable levels for all persons
- Affordable education, skill training and retraining must be available to all citizens
- Multi- and trans-disciplinarian approaches to service delivery are comprehensive and cost effective models to meeting needs
- Affordable support systems: transportation, child and adult care, and services to the disabled are needed to encourage economic independence.
- In an environment that affords opportunities for self-fulfillment, all people are expected to employ personal commitment and determination to achieve success in their lives
- Successful programs must involve consumers in planning, development and assessment

SMTCCAC'S FUNDERS

Bank of America
Board of Directors
E-Rate
E*TRADE Bank
Charles County Government
St. Mary's County Government
Corporation for National and Community Service (CNCS)
Governor's Office on Service & Volunteerism
HELP Association, Inc.
Maryland Department of Health and Mental Hygiene (DHMH)
Maryland Energy Administration (MEA)
MD Department of Housing & Community Development (DHCD)
Maryland Department of Human Resources (DHR)
PNC Bank
Private Individuals
Tri-County Council of Southern Maryland
Rotary Club of Leonardtown
Rotary Club of St. Mary's County - Lexington Park
Southern Maryland Electric Cooperative (SMECO)
U.S. Dept. of Agriculture
U.S. Department of Energy
U.S. Department of Health and Human Services
United Ways of Calvert, Charles and St. Mary's County
Wal-Mart Corporation

AFFORDABLE RENTALS

SMTCCAC, Inc., through its partnerships, provides affordable rentals to residents in Calvert, Charles and St. Mary's County residents. A listing of the rental housing portfolio with current rents are shown.

THE COURTYARDS AT FISHING CREEK I (Kellams II)

3945 & 3955 Gordon Stinnett Ave, Chesapeake Beach, MD

30 Garden Apartment Units

1 bedroom (6) & 2 bedrooms (24)

Rents - \$490 to \$890, plus utilities

FISHING CREEK TOWNHOMES (Kellams IV)

3861 & 3921 Gordon Stinnett Ave, Chesapeake Beach, MD

16 Townhouse Units

2 bedroom (8) & 3 bedrooms (8)

Rents - \$580 to \$940, plus utilities

YARDLEY HILLS I

Yardley Drive, Prince Frederick, MD

28 Multi-family units

2 bedrooms (14), 3 bedrooms (12) & 4 bedrooms (2)

Rents - Average \$637 - \$962, plus utilities

DIGGS CIRCLE

Nanjemoy Drive, La Plata, MD

20 Townhouse Apartments

2 bedrooms (7 units) & 3 bedrooms (13)

Rents - \$756 to \$950, plus utilities

THE COURTYARDS AT FISHING CREEK II (Kellams III)

3925 & 3935 Gordon Stinnett Ave, Chesapeake Beach, MD

30 Garden Apartment Units

1 bedroom (6) & 2 bedrooms (24)

Rents - \$490 to \$890, plus utilities

PRINCE FREDERICK VILLAS

Stamper Court, Prince Frederick, MD

25 Townhouse Apartments

1 bedroom (6), 2 bedrooms (13) & 3 bedrooms (6)

Rents - \$680 to \$1,182 - rental assistance on units
(tenants pay 30% of their income)

YARDLEY HILLS II

76 Multi-family units

2 bedrooms (38) & 3 bedrooms (38)

Rents - Average \$750 - \$1,050, plus utilities

HUNTING CREEK

46925 Crocus Street, Lexington Park, MD 20653

70 Townhouse Apartments

1 bedroom (6), 2 bedrooms (36 units) & 3 bedrooms (28)

Rents - \$458 to \$1,040, plus utilities

Income limits apply

COMMERCIAL DRIVER'S LICENSE TRAINING

The SMTCCAC, Inc. Commercial Driver's License Training program completed its 13th year as an approved Maryland Higher Education Career Training School. The program operates year-round and accepts students on an on-going basis. Graduates left the program qualified to drive box trucks, dump trucks, mixer trucks, passenger buses and school buses.

- 19 people graduated with a Class B Commercial Driver's License
- 11 people found employment or were able to advance in their current job using their new certification

FRIENDLY HEALTH SERVICES



Friendly Health Services is certified as a Medical Adult Day Care and Senior Center Plus by the Maryland Department of Health and Mental Hygiene. It operated Monday through Friday in Huntingtown, Calvert County, Maryland. The program helped participants maintain their highest possible level of health and functional abilities through social interaction, activities and nutrition.

Fourteen (14) elderly and 22 disabled persons were provided with 3,553 Days of Care at Friendly Health Services. Participants were transported to 182 medical or therapeutic appointments and 86 trips for pharmacy services.

Information Exchange and Action Lead to Positive Outcomes for Individuals & Community

Inter-program collaboration - housing counselor & Head Start family advocate talk before a financial literacy workshop.



Customer departing from a one-on-one homebuyer counseling session.



Energy Assistance Vendors Meeting



Senior Companions at a monthly in-service training.

HEAD START PROGRAM



Purpose and Mission

Head Start is a national program that promotes school readiness by enhancing the social and cognitive development of children through the provisions of education, health, nutritional, social, and other services to enrolled children and their families.

SMTCCAC's mission is to promote school readiness by assisting eligible families to improve social, emotional and cognitive development of the individual child through the support of educational, health, nutritional and community services.

SMTCCAC Head Start was funded to serve 120 children in Charles County in the 2014-2015 program year. 135 children and 128 families were served during the year.

Child Demographics

11 were of Hispanic/Latino origin, 124 were not

Race

American Indian or Alaska Native	1
Black or African American	102
White	12
Bi-racial or Multi-racial	15
Other race	4
Elected not to specify race	1

Family Demographics

20% or 26 were two parent families

80% or 102 were single-parent families

Families Highest Level of Education

Bachelors degree or higher	7
Associates degree or higher	48
High School or GED	63
Less than high school	10

Employment - Two Parent Families

Both employed	6
One unemployed	16
Both unemployed	9

Employment - One Parent Families

Employed	53
Unemployed	40
Military (of employed families)	1

Head Start Components

• EDUCATION

The program's goal is to ensure that children leave Head Start with increased abilities & experiences that have prepared them to be successful students on all levels and ready for kindergarten. The Creative Curriculum was used to provide a developmentally appropriate early childhood education program. An individualized learning program was developed for each child.

• MENTAL HEALTH, DISABILITIES/SPECIAL NEEDS

Regardless of the disability or special need of any child, all children learn better in a classroom with their typically developing peers. At least 10% of Head Start's enrollment was set aside for children with diagnosed disabilities. These children participated in the full range of classroom activities and had their individual needs met.

• HEALTH AND SAFETY

Children were screened within 45 days to identify and address vision and hearing problems early so that they do not interfere with their learning and development. Staff assisted families to provide comprehensive health care for their child.

Children were taught basic health practices, such as hand washing and tooth brushing.

• TRANSPORTATION

Transportation was provided for two of the centers. Transportation was provided in accordance with state and federal requirements. A bus monitor was on each route to ensure safety and extend the learning of the children.

• HEALTHY MEALS

The program ensured that the children received a healthy breakfast, lunch, and/or snack. The meals were served family style to encourage the development of social and language skills. A wide variety of foods with emphasis on fruits and vegetables, whole grains, and limited sugar, salt and fats. Menus were reviewed by a registered dietitian.

• PARENT INVOLVEMENT

Involving parents in the Head Start Program is a guiding principle to the Head Start Program.

CLASSROOM OUTCOMES

135 children were in part-day classes - 3.5 hours a day, 4 days a week

The average monthly attendance was 82%

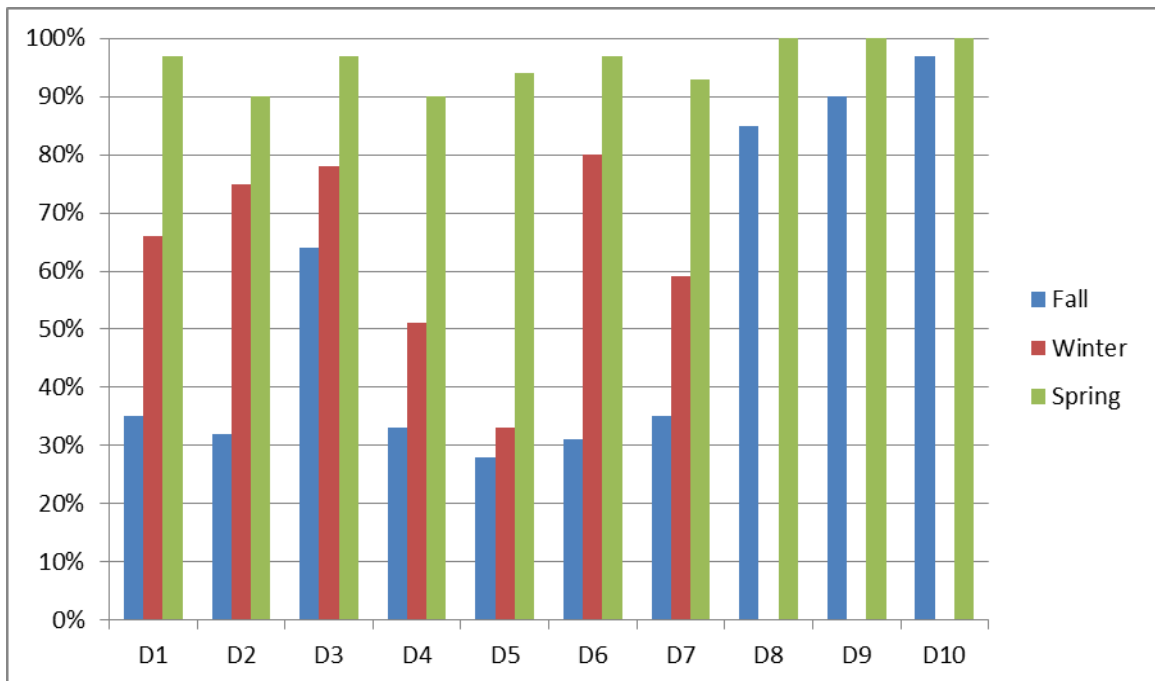
CHILD OUTCOMES

The children in the Head Start program were assessed using the Teaching Strategies Gold assessment system three times during the year - Fall, Winter, and Spring. The outcomes were used to plan classroom activities to maximize the development of each individual child in the areas of :

- **D1** - Social-Emotional
- **D2** - Physical Gross Motor
- **D3** - Physical Fine Motor
- **D4** - Language
- **D5** - Cognitive
- **D6** - Literacy
- **D7** - Mathematics
- **D8** - Science
- **D9** - Social Studies
- **D10** - Art

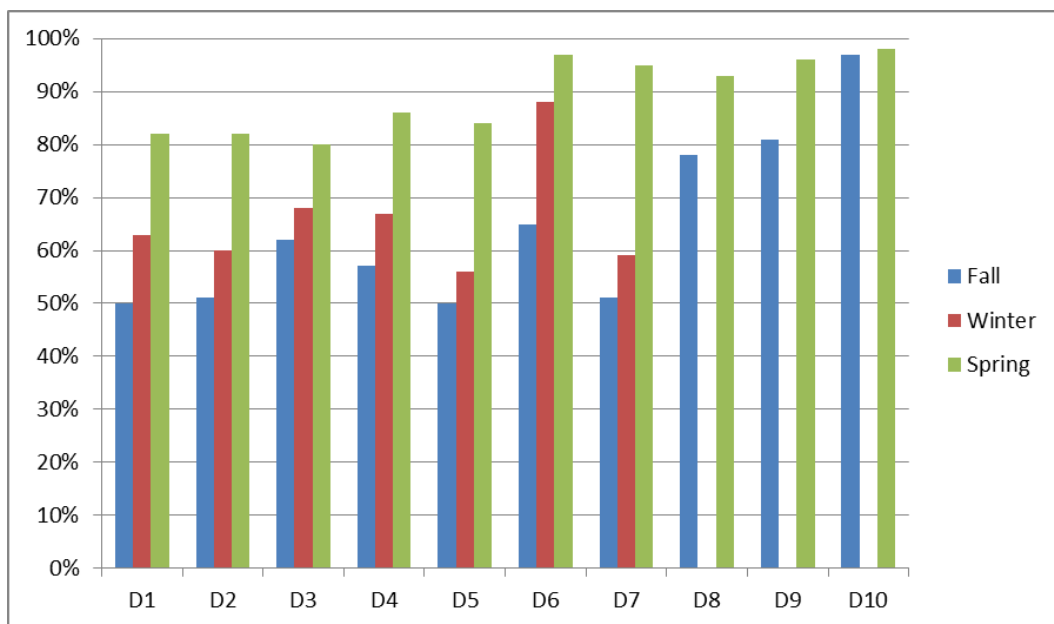
The following graphs show a comparison between Fall, Winter, and Spring assessment results of children who met or exceeded school readiness goals during the 2014-2015 program year. (Domains D8—D10 shows children who are emerging or meet school readiness goals for Fall and Spring)

2014-2015 Final Outcome Data for Three Year Old Children



In Fall, only the physical fine motor domain had at least 60% of three-year-olds meeting or exceeding school readiness goals. By Spring, at least 93% of three-year-olds were meeting or exceeding school readiness goals. Social-emotional, physical fine motor and literacy had the highest percentage (97%) and language with the lowest at 93%. The children had high performance levels in science, social studies and art. Their lowest performance level was in science at 85% in the Fall. In the Spring all children were at 100% in all three domains.

2014-2015 Final Outcome Data for Four Year Old Children



In Fall, only the physical fine motor and literacy domains had 60% of children meeting or exceeding school readiness goals. By Spring, at least 80% of children were meeting or exceeding school readiness goals. Literacy had the highest percentage rate at 97%, with physical fine motor being the lowest at 80%. The four year olds scored high in science, social studies and art, while those with the lowest percentage emerged to or met goals at 78% in science. By Spring, the science rating raised to 95%, which was still the lowest of the three domains. Art had the highest percentage rate - 98%.

The graphs show that both three-year-olds and four-year-olds made progress throughout the year in each domain.

In a recent Classroom Assessment Scoring System (CLASS) review, SMTCCAC Head Start scored low in the instructional support area.

Based on the data, strategies will be implemented for improvement in the areas of CLASS, teacher and staff development. Plans to acquire resources for additional classroom support will be developed.

HEALTH OUTCOMES

	End of Enrollment	
	Number of Children	% of Enrollment
Have Health Insurance	133	99
Ongoing source for medical care	134	99
Ongoing source for dental care	134	99
Have up-to-date immunizations	130	96

PARENT INVOLVEMENT & FAMILY SERVICES

The key components of achieving parent involvement in the program are as follows:

- Creating a partnership with parents to empower them to set and achieve family goals - Relationships with parents are built beginning at enrollment. Families are linked to services necessary for them to move toward their goals. Parents are encouraged to apply for staff positions.
- Ensuring programs are open to parents at any time - Parents are provided opportunities to volunteer and be involved in the development of curriculum. Parents assist in organizing center parent committees.
- Supporting parents as primary teach for their children - Parents are involved in determining the educational goals for their children and provided with opportunities to enhance their parenting skills. The program assists parents to transition their children into school. Parents are helped to become active partners in assessing health care for their children.

Policy Council

Policy Council is an elected group of parents that assists Head Start in program decision-making and program governance. The Policy Council is part of the shared governance team that includes the Board of Directors, Program Staff and Policy Council. Together the team guides the direction of the Head Start program.

Parents were elected from each Head Start center to serve as representatives on Policy Council in September and October of 2015. Thirteen parents attended during the year. In addition, two community representatives were elected in October and participated throughout the year. Policy Council assists program staff to develop program plans, policies and procedures that meet the needs of the community. They also have input on grant proposals, budgeting, hiring and termination and fundraising. Policy Council also participates on School Readiness Team, the Health Services Advisory Committee and the Self-Assessment Team.

FY 2014-2015 Budget

Categories	Budgeted	Spent	Non-Federal Match	Explanation
Personnel	582,814	527,640	24,788	Parent Volunteers
Fringe	178,693	179,297		
Travel	0	0		
Supplies	11,319	7,362		
Contractual	9,340	9,095	14,315	Community Vols.
Other	67,502	132,543	198,669	Space/Cash/Other Expenses
Indirect	87,054	80,785		
Total	951,090	951,090	237,772	

Food Cost 2014-2015

Funding Source	Projected Budget	Actual Reimbursement	Spent
USDA/CACFP	55,000	54,153	57,309

\$3,156 was spent over USDA reimbursement, half of the cost was offset by Policy Council donated funds and the rest by Head Start funds.

Projected Food Cost 2015-2016

Funding Source	Projected
USDA/CACFP	60,000

FY 2015-2016 Budget

Categories	Budget	Explanation
Personnel	533,383	
Fringe	192,551	
Travel	1,000	
Supplies	10,100	Office, Classroom, Medical
Contractual	9,500	Health, Mental Health, Copier
Other	105,300	Insurance, Facilities, Transportation
Indirect	84,888	
Training & Technical Assistance	14,368	
Total	951,090	

PROGRAM REVIEWS

SMTCCAC Head Start received three reviews during the 2014-2015 program year. There were no findings in Environmental Health and Safety, three findings in Finance and a low score in CLASS.

In the fiscal area, the program received non-compliances in reporting, cost principles, and facilities and property. A Corrective Action Plan was put in place to obtain appraisals on property used as donated space, correct a discrepancy in the amount of indirect cost used and create procedures to add to the financial manual to ensure future compliance.

In CLASS (Classroom Assessment Scoring System), the program received scores of 5.8281, 5.8333 and 2.1875 in Emotional Support, Classroom Organization, and Instructional Support, respectively.

To improve CLASS scores, SMTCCAC Head Start implemented a plan to develop a CLASS coaching program. The program required two staff members to become CLASS reliable and the purchase of a CLASS curriculum and development training program. The curriculum was purchased in 2015 and the development program will be purchased in 2016.



2014-2015 Center Locations

Brawners Head Start Center - 6655 Weaver Street - Indian Head, MD 20640

Eva Turner Head Start Center - 1000 Bannister Circle - Waldorf, MD 20603

Waldorf @ Health Partners - 2070 Crain Highway - Waldorf, MD 20601

Administrative Office - 8371 Old Leonardtown Road - Hughesville, MD 20637

HOUSING COUNSELING PROGRAM

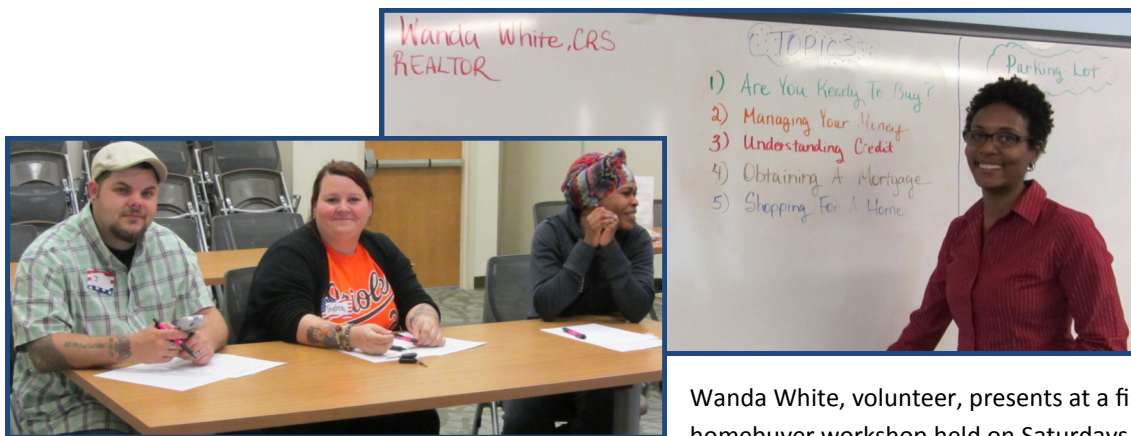
Southern Maryland Tri-County Community Action Committee, Inc. is a U.S. Department of Housing and Urban Development (HUD) approved housing counseling agency. Our housing counselors work with the general public. The program collaborates with numerous local entities to help their clients increase their knowledge on issues pertaining to housing. SMTCCAC, Inc. is part of the Maryland Housing Counseling Network.

The Housing Counseling Program offered a comprehensive array of services - pre-purchase homeownership counseling, budget counseling, credit counseling, mortgage default counseling, reverse mortgage counseling and rental delinquency counseling.

Eleven homebuyer workshops were held with **121 people** in attendance. **Twenty-two households** became homeowners after attending **the workshops and receiving one-on-one counseling**. The purchase of those homes put a total of **\$5,253,486** back into the local economy and provided the homeowners with a valuable asset.

184 households received **default and delinquency counseling** to inform them on options available to help them avoid losing their homes to foreclosure. The challenge was getting people in before things had progressed too far to make saving their home possible.

After working with housing counselors 101 families were able to demonstrate the ability to complete and maintain a budget for over 90 days.



Head Start parents attend a workshop to increase their financial knowledge.

Wanda White, volunteer, presents at a first-time homebuyer workshop held on Saturdays.

HOUSING OPPORTUNITIES FOR PERSONS WITH AIDS

The Housing Opportunities for Persons with AIDS, also known as HOPWA, was administered by Southern Maryland Tri-County Community Action Committee, Inc. under contract with the Greater Washington Urban League using Housing and Urban Development funding.

Eighteen Calvert County residents living with AIDS received assistance with their monthly rent in the Housing Opportunities for Persons with AIDS (HOPWA) program administered by SMTCCAC, Inc. They were responsible for using 30% of their income for rent and utilities, anything over that was handled by the program. **\$144,506** was expended for **rental and utility assistance**.

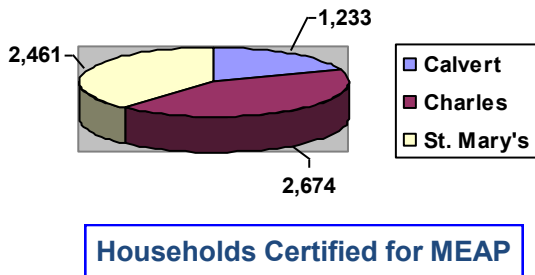
TRI-COUNTY FUEL FUND

Households facing the possibility having their utility service disconnected or struggling to come up with enough money to have service reinstated, obtain oil, propane, kerosene and sometimes wood to keep their homes safe and habitable were able to utilize the services of the Tri-County Fuel Fund. Administered mid-January through April, the benefit dollars received by clients from the Fuel Fund are used to match a portion of the amount owed to the vendor or utility. A portion of the funds must come from the client. Often times more funds are needed to resolve their problem. When that occurs the Fuel Fund intake worker makes referrals to other organizations and churches that may have funds to fill the gap to resolve their problem. The network of providers work closely to meet the need of households who may not be eligible for the Maryland Energy Assistance Program or perhaps have already received the allowed annual grant but still face hardship.

- 110 Households received funding
- \$35,359 in monetary assistance was provided
- 22 Calvert County Households \$8,725 disbursed
- 59 Charles County Households \$18,400 disbursed
- 29 St. Mary's County Households \$8,235 disbursed

The Tri-County Fuel Fund was administered using funds that came to the agency from donations made by local residents, organizations and Southern Maryland Electric Cooperative's (SMECO) Members Helping Members initiative. Funds donated directly to Members Helping Members can only be used for SMECO customers. The Rotary Clubs of Lexington Park and Leonardtown donated funds designated for St. Mary's County residents, HELP Association donated for Calvert County residents and funds from United Way of Charles County were designated for residents of that county.

OFFICE OF HOME ENERGY PROGRAMS



SMTCCAC serves the three Southern Maryland jurisdictions as the local administering agency for Maryland Department of Human Resources (DHR) Office of Home Energy Programs (OHEP).

6,841 households applied for energy assistance in the program year, 6,368 households received grants to assist them with their primary heating source and electric bills through the Maryland Energy Assistance Program (MEAP), Maryland's Low-Income Heating Assistance Program (LIHEAP). MEAP benefits went directly back into the local economy when they were disbursed directly to energy and fuel providers on behalf of the applicants.

MEAP Funds Expended by County

<u>Calvert</u>	<u>Charles</u>	<u>St. Mary's</u>
\$663,562	\$1,504,484	\$1,679,566

Households also benefited from the Electric Universal Service Bill Assistance and Arrearage Programs (EUSP). These grants made home energy bills more affordable and helped provide stability when it was most needed. Many first-time customers were able to learn about and enroll in the Universal Service Protection Plan and begin making even monthly payments for electric service.

EUSP Funds Expended by County

<u>Calvert</u>	<u>Charles</u>	<u>St. Mary's</u>
\$832,492	\$1,703,918	\$1,569,957

WEATHERIZATION/HOUSING PRESERVATION

This past year The **Weatherization Assistance Program** provided service to **97** individuals. The following households received services.

- **8** in **Calvert** County
- **22** in **Charles** County
- **12** in **St. Mary's** County.

Of the 42 households that received home energy audits, 31 of those households received weatherization services such as installation of insulation, caulking, hot water heater wraps, low-flow shower heads and CFL bulbs to improve the energy efficiency in the home. **Twenty (20) households had furnaces replaced** for a total value of \$95,357. Funding was made available through the EmPower Maryland and the Maryland Energy Administration programs. Another 3 homes had their furnaces repaired.

Maryland Department of Housing and Community Development's Weatherization Assistance Program funding was able to be used to repair or replace air conditioning units.

Southern Maryland will not provide Weatherization services in the next fiscal year after it completes work scheduled for completion in FY16 using Maryland Energy Administration funding.



THE EMERGENCY FOOD ASSISTANCE PROGRAM

The Emergency Food Assistance Program, also known as TEFAP, is a U.S. Department of Agriculture program administered through the Maryland Food Bank under a contract with the Maryland Department of Human Resources.

SMTCCAC, Inc. continued in its role as a link in the safety net for families facing food insecurity forming new partnerships, such as the one formed with End Hunger of Calvert County. The program was able to continue receiving and distributing supplemental food to households that are not always sure where their next meal is coming from.

Ten food shipments were received - **347,732** pounds of food, valued at **\$196,834** was received and distributed in the community by volunteers. This food helped stock the shelves of **28 food pantries** and **2 soup kitchens**.

23,253 food packages were provided to households living at 150% of federal poverty guidelines thanks to the program.

- **7,342** went to **Calvert** households
- **10,399** went to **Charles** households
- **5,512** went to **St. Mary's** households

Approximately **500** volunteers contributed to the success of the program, without them the food would not get offloaded, warehoused, loaded again when pantries pick it up or distributed to families facing food insecurity.

SENIOR COMPANION PROGRAM



A fantastic group of low-income seniors, age 55 and older, provided one-on-one volunteer service to frail, elderly and/or disabled persons. They gave special attention and care to their clients and in many cases respite and piece of mind to primary caregivers.

The Senior Companions' contributions in the lives of persons with limited opportunities for interaction and companionship cannot be overstated. The direct service provided by these volunteers reduced the isolation numerous homebound older persons feel and gave the Senior Companions a sense of purpose. Primary caretakers were able to carry on with their daily routines without being concerned about their loved ones. The program offers win-win situations for all involved.

	Volunteers	Hours	Clients Served
Calvert	9	11,452	25
Charles	30	29,307	44
St. Mary's	24	22,829	38

Companions benefited from the camaraderie and sense of purpose they felt. The stipends they received for their service helped them close gaps in their household budget. The monthly in-service training covered topics that fostered their safety and economic stability.



Monthly in-service trainings provide Senior Companions with information beneficial to their well-being, helps increase their effectiveness as volunteers and allows them to fellowship with each other to share their experiences. They are a valued resource to the community as older persons age in place.

SOUTHERN MARYLAND AREA RURAL TRANSPORTATION

Southern Maryland Area Rural Transportation, also known as SMART provided transportation to **41 Charles County residents with a total of 155 trips** to enable them to reach therapy sessions and other activities important to their success and stability in the community. This transportation was provided under a contract with the Charles County Circuit Court. The contract with the courts will not continue into the new fiscal year.

- **15 youth** involved with the **Charles County Juvenile Drug Court System**, were transported by SMART from the schools or homes to services and activities
- **8 adults** involved with the **Charles County Family Drug Court** were transported to services important to their recovery and reunification with their children and other family members.

Statement of Financial Position

June 30, 2015

Assets

Current Assets		<u>2015</u>	<u>2014</u>
Cash and Cash Equivalents	\$	155,782	329,036
Contracts and Grants Receivable		693,804	869,364
Other Receivables		28,312	47,286
Prepaid Expenses		<u>75,738</u>	<u>71,172</u>
Total Current Assets		1,683,746	1,316,858
Non-Current Assets			
Due From Affiliates and Related Parties		6,335,917	6,181,126
Notes Receivable and Accrued Interest		2,397	9,675
Investment in Limited Partnerships		288,595	288,595
Property Held for Development		128,226	128,226
Fixed Assets, net		<u>1,091,673</u>	<u>1,204,463</u>
Total Non-Current Assets		7,846,808	7,812,085
Total Assets	\$	<u>8,800,444</u>	<u>9,128,943</u>

Liabilities and Net Assets

Liabilities			
Accounts Payable and Other Accrued Expenses	\$	67,177	102,282
Accrued Liabilities		113,166	160,146
Current Portion Notes Payable		38,341	156,304
Line of Credit		417,446	288,849
Other Liabilities		<u>87,650</u>	<u>151,927</u>
Total Current Liabilities		723,788	858,508
Long-Term Liabilities			
Due to Affiliates and Related Parties		620,359	620,359
Long-Term Portion of Notes Payable		827,990	866,164
Deferred Loan Payable		283,725	283,725
Total Long -Term Liabilities		<u>1,732,074</u>	<u>1,770,248</u>
Total Liabilities		2,455,854	2,628,751
Net Assets			
Unrestricted Net Assets		2,677,445	2,762,750
Temporarily Restricted Net Assets		3,667,145	3,737,437
Total Net Assets		<u>6,344,590</u>	<u>6,500,187</u>
Total Liabilities and Net Assets	\$	<u>8,800,444</u>	<u>9,128,943</u>

Southern Maryland Tri-County Community Action Committee, Inc.

P.O. Box 280

Hughesville, MD 20637-0280

Calvert 410-535-1010

Charles 301-274-4474

St. Mary's 301-475-5574

Metro 301-870-3770

Fax 301-274-0637

www.SMTCCAC.org

info@smtccac.org



Community Partner



CFC # 62038